



## LANCEWAD - Landscape and Cultural Heritage in the Wadden Sea Region

Besides the outstanding ecological value of the Wadden Sea, the wider area is also unique for its cultural heritage. Since the last glaciation, geophysical processes created an extraordinary landscape, which has been characterized by human activities during the ages. A long settlement history with its consequences on water management, agriculture, trade and society has formed the region as a whole, but yet with a wide range of regional differences.

To give more attention to the cultural aspects and human activities, on 4 February this year a new trilateral project "Mapping Landscape and Cultural Heritage in the Wadden Sea Region", LANCEWAD was officially launched in Tønder, Denmark. Besides national funding from The Netherlands, Denmark, Lower Saxony and Schleswig-Holstein, the project is co-financed by the EU Interreg IIc North Sea Region Program.

The project will map and describe the landscape and cultural heritage of the Wadden Sea area with a view on sustainable development possibilities and a common contribution to integrated management and protection.

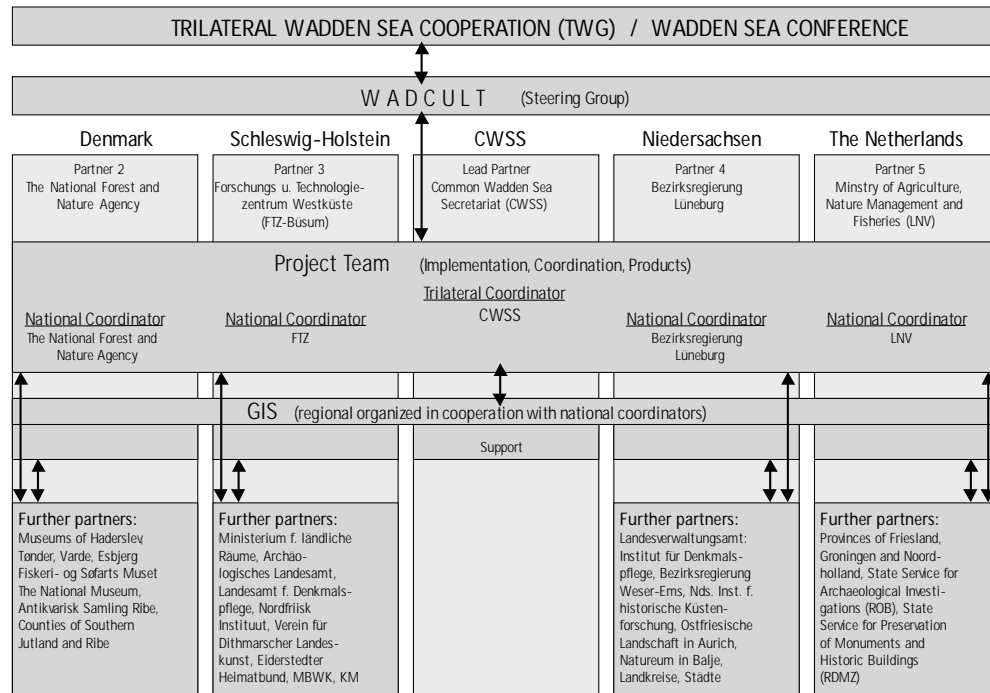
To get the project started, many steps have been made during the last years. A trilateral conference on cultural heritage in the Wadden Sea region took place in Ribe, September 1997. Here, a common scientific foundation for the project and a network

of researchers and administrators working in the region was established. In 1999, a Joint Work Plan was adopted and finally, a project team has been established with national coordinators and working groups in the 4 countries and a trilateral coordinator at the Common Wadden Sea Secretariat in Wilhelmshaven.

The results of the project will be depicted by different maps and a report, which describes the historical development of the landscape and the importance of the cultural heritage through time. For data collection and handling, a geographical information system (GIS) will be used in the national working groups as well as for the common maps on the trilateral level. The GIS allows a connection of all data and can show the interrelation between well defined data sets.

The project LANCEWAD will deliver maps and a final report by the end of June 2001. Until then, many steps will lead to the ambitious objectives proposed so far. As a first step in the mapping process, an overall description of these characteristics has to be worked out. The second step is to choose the most important cultural heritage and landscape themes and elements for mapping. Themes like water management, settlements and elements like dikes, locks, terps, archaeological sites etc. are among the most obvious, but also elements like historical sites and places of trade and travel will be

Søren Espersen, National Forest and Nature Agency, Copenhagen, DK



Organizational structure of the Lancewad project

mapped. An important part of the description will be to lay down the value of the specific element, e.g. on the basis of its connections to other elements. The mapping will mainly be based on available information. An inventory of lacks and gaps will be an important by-product for future research.

A further step will be to work out regional and overall maps of all the different elements and themes based on their values. The final product will be an overall quality map of the landscape and cultural heritage of the region. This will be associated with a statement of the valuation of the qualities

on the different sub-regions.

Another goal of the project is to enhance the quality of management and protection. A draft proposal for common criteria and guidelines related to spatial planning, conservation and management of cultural heritage and cross-sectional management will be worked out. The basis will be an analyses of the present organisational and legal structure pertaining to landscape and cultural heritage in the three countries. The draft proposal will be forwarded to the next Trilateral Governmental Conference in 2001 in Esbjerg.

Søren Espersen  
 Skov- og Naturstyrelsen  
 Haraldsgade 53  
 DK 2100 Copenhagen Ø  
 sre@sns.dk