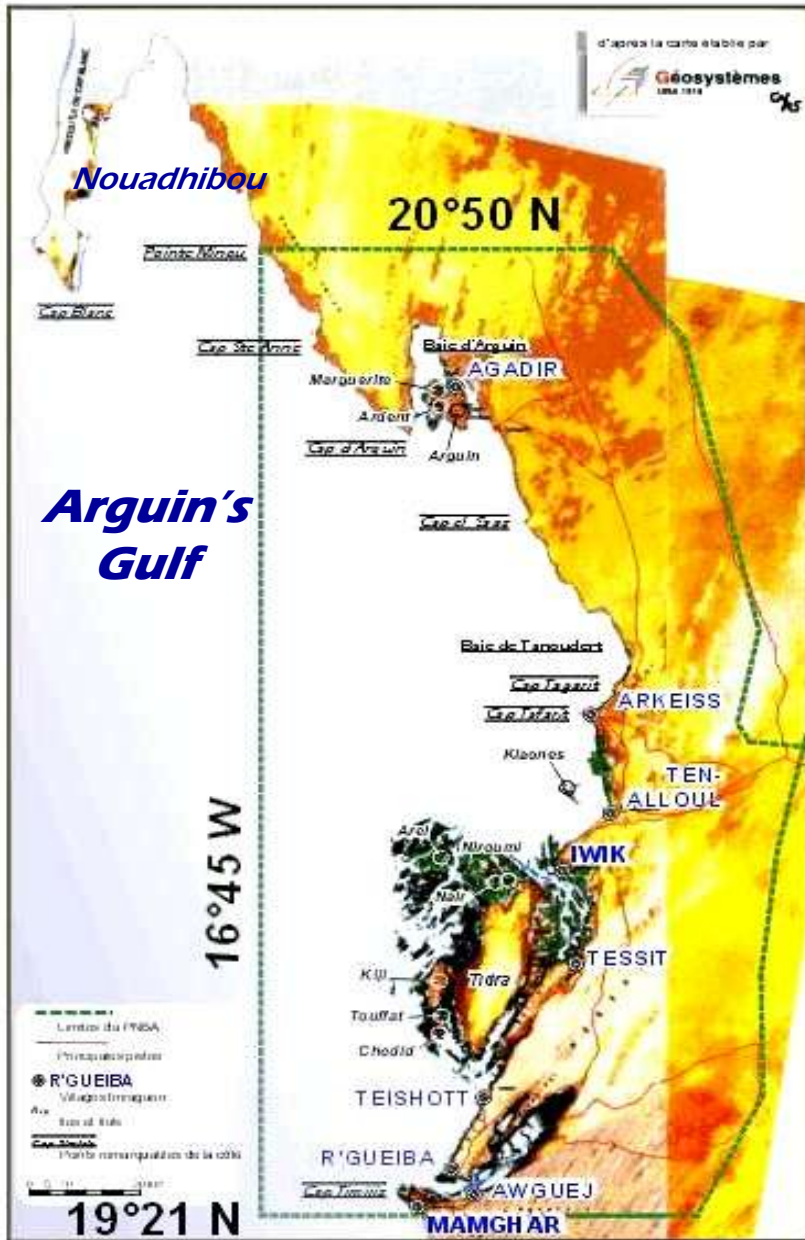


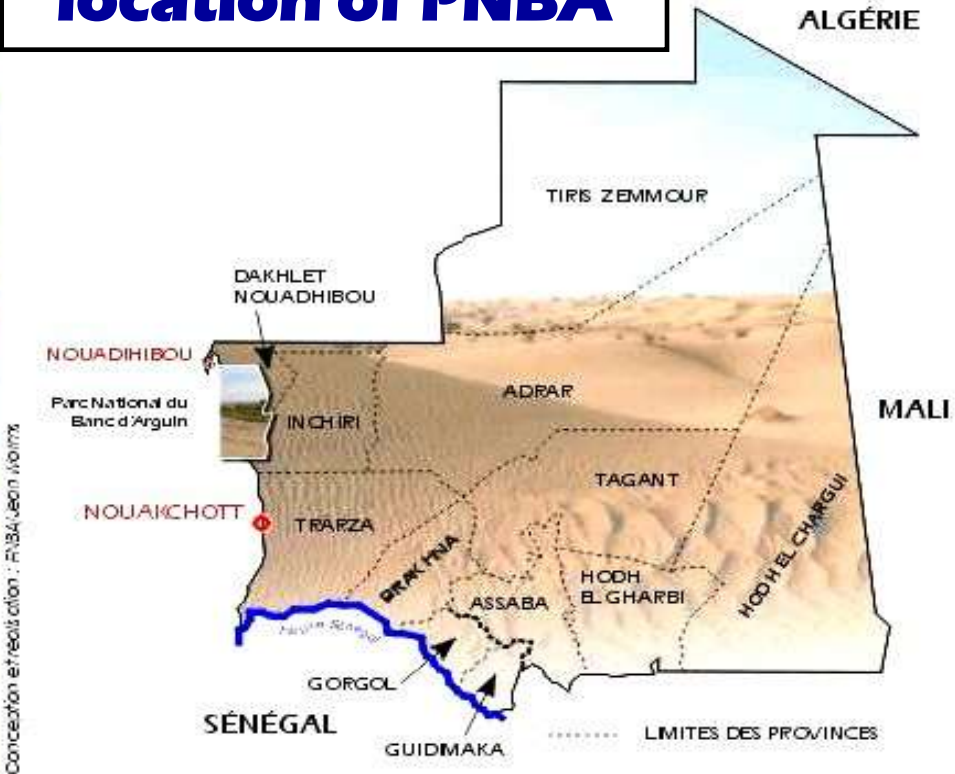


BANC D'ARGUIN NATIONAL PARK A WORLD HERITAGE SITE





Geographical location of PNBA



Conception et réalisation : PNB/Jeon Young

THE GULF OF ARGUIN

- **An ancient delta of unique characteristics**
- **A bio geographical crossroad**
- **The only large estuarine area between Europe and tropical Africa**
- **One of the most biologically productive marine areas in the world**
- **An irreplaceable support for fisheries and social stability West Africa**



LE PARC NATIONAL DU BANC D'ARGUIN MAURITANIE



- **The largest coastal and marine protected area in Africa**
- **30% of all western Palaearctic waders in winter**
- **One third of the coast line of Mauritania and 60% of its shallow waters (less than 20 metres deep) protected**
- **At least 1,000 km² of sea grass beds**
- **An area of outstanding importance to sustain industrial and small scale fisheries in the region**
- **Home to the only maritime culture in the country**
- **Wetland of International Importance – RAMSAR 1982**
- **World Heritage Site – UNESCO 1989**
- **Gift to the Earth – WWF 2000**

INTERVENTION PRIORITIES

ECOLOGICAL

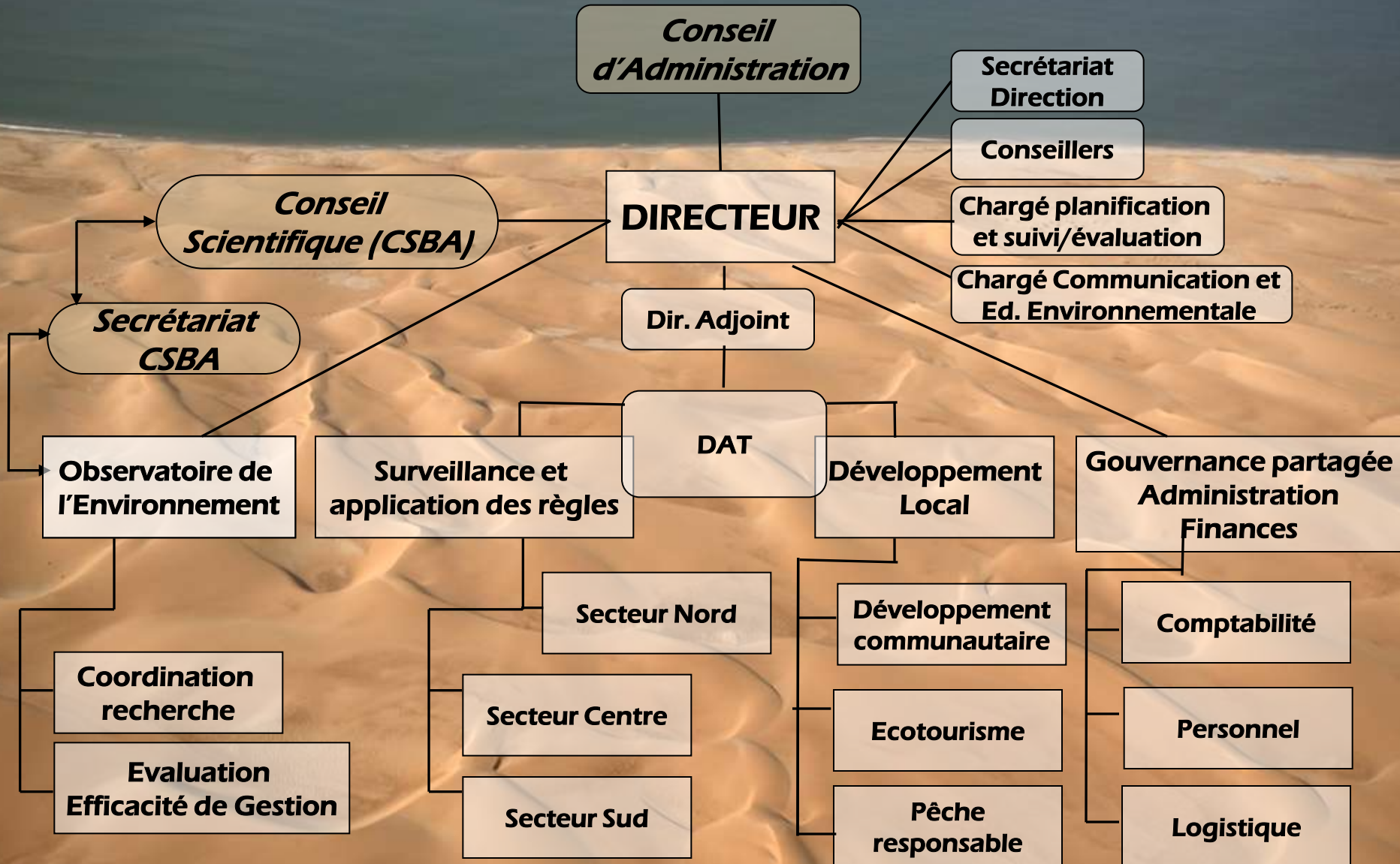
**LANDSCAPES
FAUNA - FLORA
POPULATIONS**

ECONOMICAL

SOCIAL

... throughout transparent and efficient governance

ORGANIGRAMME



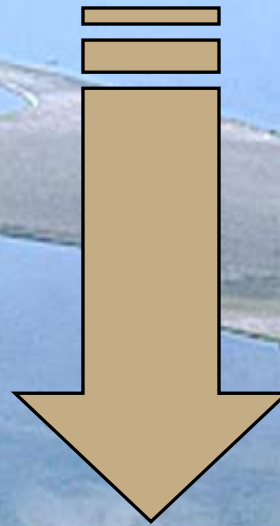
GOVERNANCE

Law 2000-024 relative to PNBA and decrees to its application

Promote national sustainable development

Encourage the improvement of the living standards of resident fishermen

Ensure the integrity of the ecosystems and its biological productivity



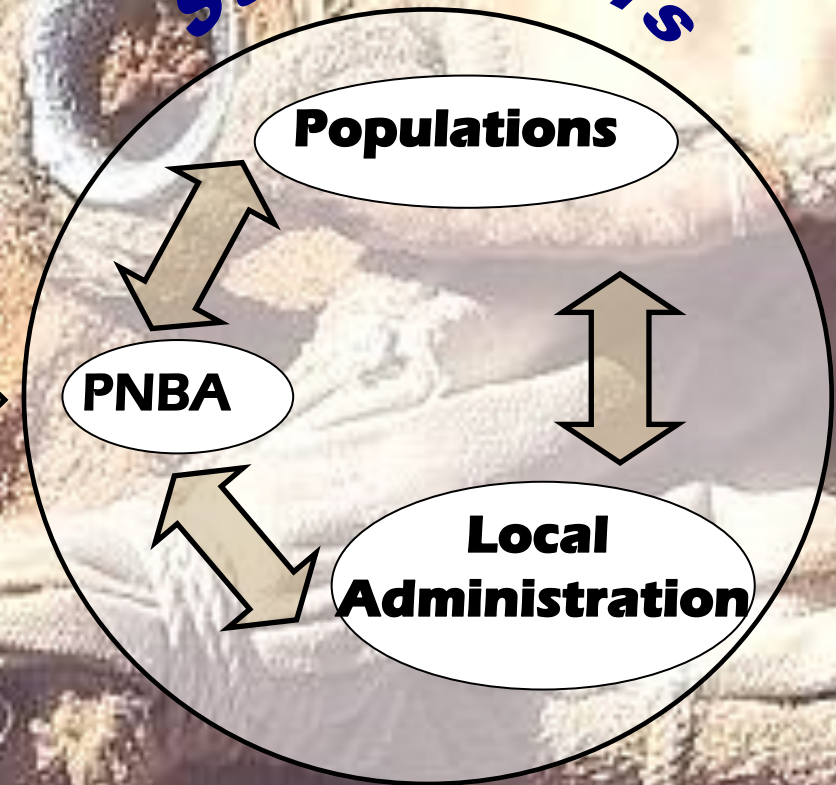
**Ministry of the Environment
Administration Council
International Scientific Council
Director
Management Plan**

PARTNERS AND STAKEHOLDERS

Partners

FIBA, WWF, UICN, IPADE, CBD Habitat, Fondation MAVA, PRCM, ONCFS, Coopération allemande, espagnole, française et néerlandaise, DSPCM, IMROP, NIOZ, Natuurmonumenten, MNHN de Paris, etc.

Stakeholders



THE MAIN THREATS

- **Increasing pressures**
 - new trans-Saharan road
 - depletion of fish resources outside the park
 - increasing pressure of small-scale motorised fleets – Tanit port
 - oil and mining industries
 - implementation of new fisheries – bivalve molluscs
- **Vulnerable Environment**
 - hydraulic retention area – risks of pollution
 - dangerous area for maritime traffic – insufficient warning signs
 - risk of contamination – iron dust, oil
- **Scientific monitoring unsatisfactory**
- **Lack of sustainable financing sources**
- **Shortage of mean and qualified personnel**

MANAGEMENT PLAN 2010 - 2014

➤ **Shared governance, management, administration and finances**

The institution PNBA manages the protected area in partnership with the stakeholders concerned, in transparency and with efficiency

➤ **Local Development**

PNBA encourages the identification of local development priorities and its implementation in close collaboration with the resident population, the civil society and the council of Mamghar

➤ **Communication and environmental education**

PNBA becomes a destination for sustainable tourism before 2014 and supports the implementation of public policies notably in what concerns environmental education

➤ **Observatory of the Environment**

The Observatory of the Environment of PNBA supplies scientific data to the direction of the park allowing the implementation of adaptive management policies

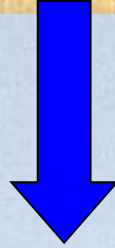
➤ **Surveillance and application of rules**

PNBA management is supported by an effective, efficient and sustainable surveillance scheme

WHAT ARE THE MAIN OBJECTIVES 2010 - 2014

- **To carry on modernisation of PNBA and ensure efficient and transparent management policies**
- **To reinforce participatory management policies underway**
- **To increase the visibility of the park and improve partnerships**
- **To set-up a trust fund**
- **To minimise negative impacts of local fisheries and promote local sustainable development**
- **To ensure that laws and rules agreed are thoroughly respected and illegal fishing is kept to a strict minimum**
- **To implement adaptive management policies based on an effective management evaluation system**
- **To strengthen logistical means, infrastructures and personnel capacity building**

**Concentration d'une importante population
de dauphins**



Concentration des oiseaux
nicheurs sur l'île de Kiaone



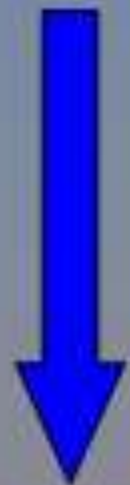
Les flamands roses



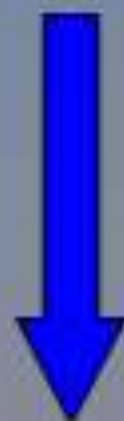
Les sternes royales



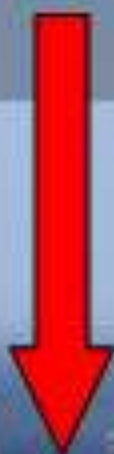
Concentration de limicoles



Les pélicans blancs



La Spatule endémique du Banc d'Arguin

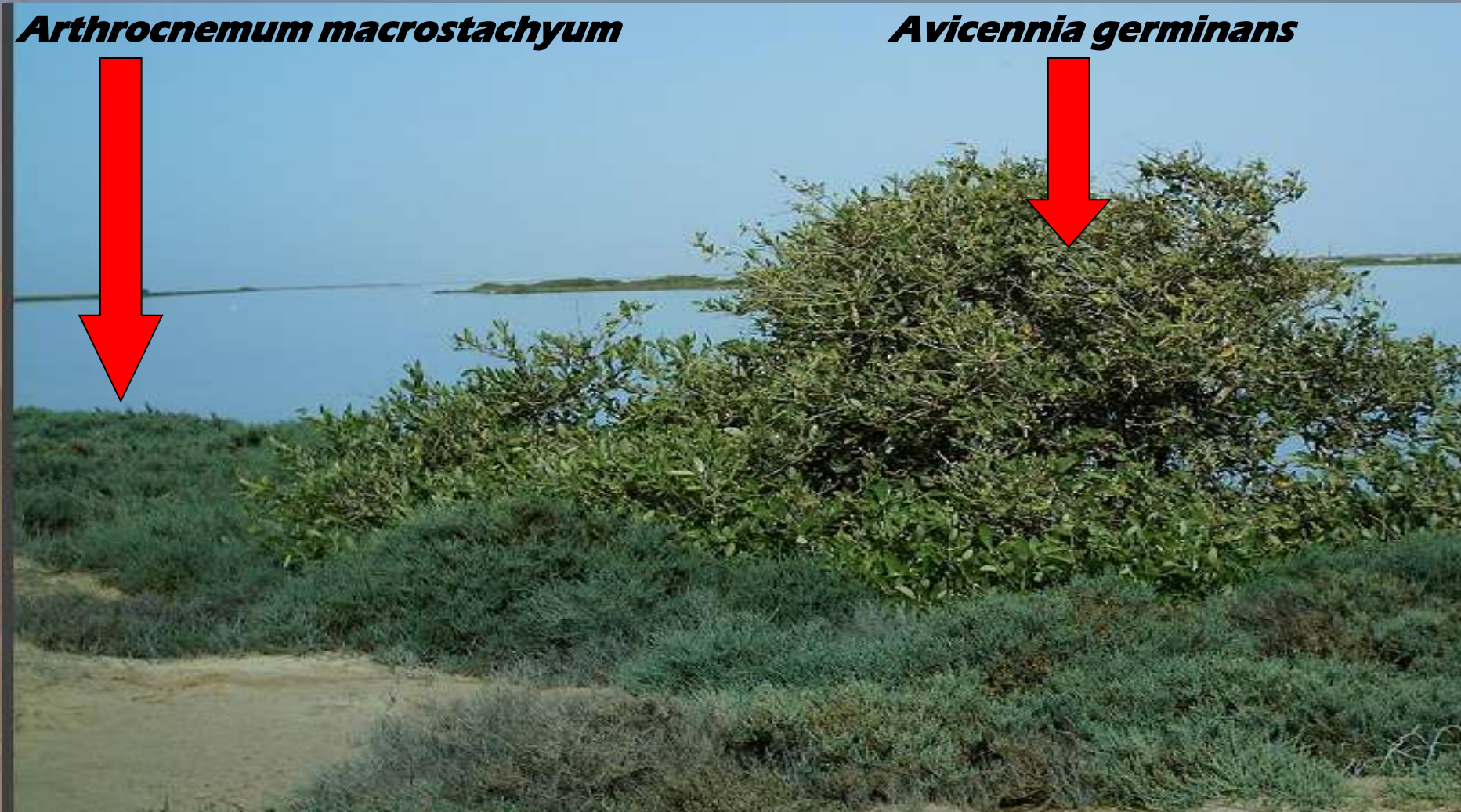


La mangrove à *Avicennia germinans* de Mamghar et *Arthrocnemum macrostachyum*

Arthrocnemum macrostachyum



Avicennia germinans



Le chacal doré (en arrière plan des cormorans africains)



Le fennec du désert



L'hyène rayée du Banc d'Arguin



Le balbuzard des côtes du Banc d'Arguin



Zygophyllum waterlotii



An aerial photograph of a coastal region. A long, narrow, light-colored island or peninsula extends from the top left towards the center right. The island has a sandy or light-colored surface with some sparse green vegetation. To the left of the main island, there is a smaller, darker island with more dense vegetation. The surrounding water is a deep blue, and the sky is a pale, clear blue. The text "Je vous remercie" is overlaid in the center of the image.

Je vous remercie