



The Wash: Conservation & Fisheries Management

Conor Donnelly, Marine Advisor, Eastern Area Government & Communities Team, East Midlands
conor.donnelly@naturalengland.org.uk

Natural England

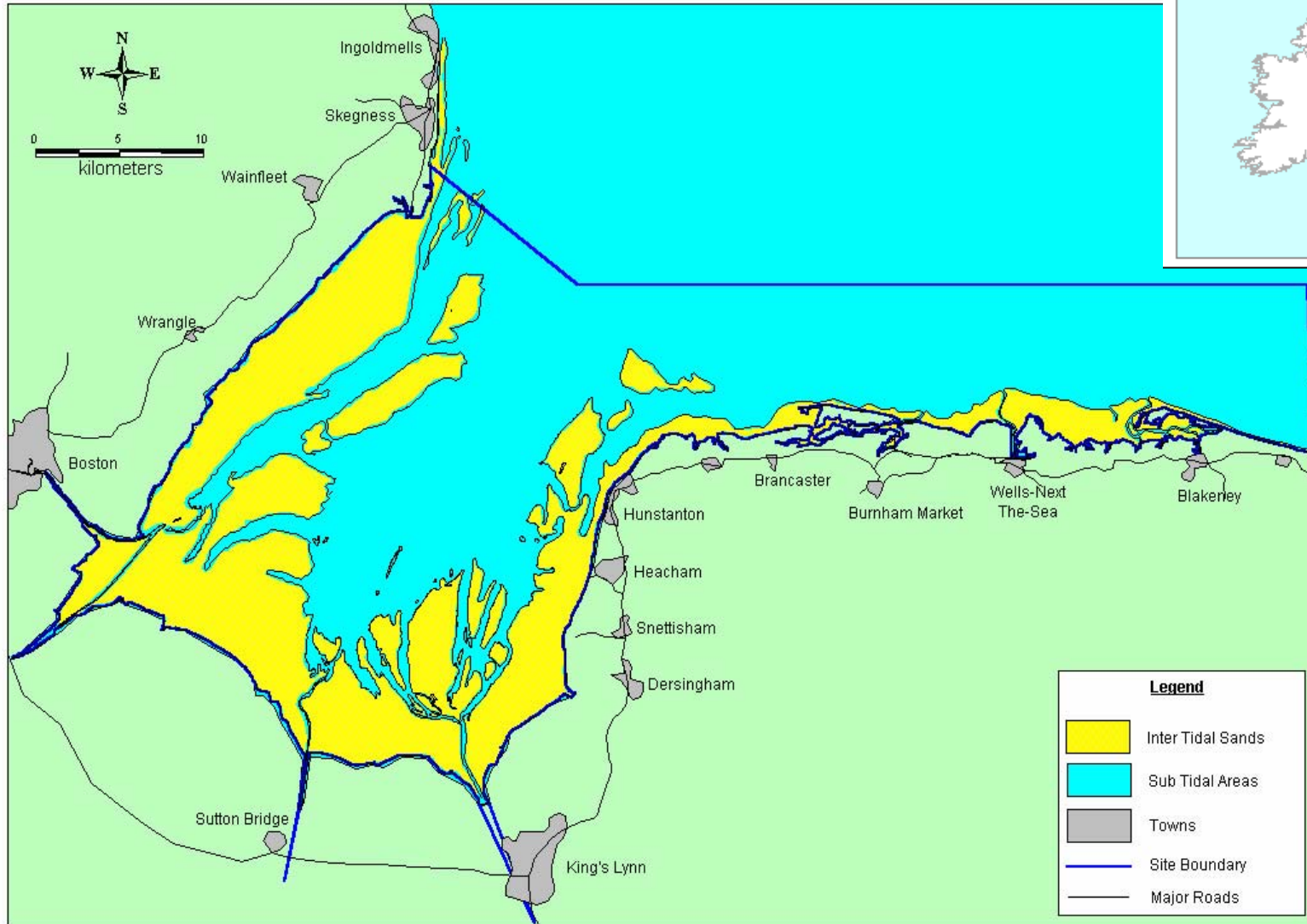
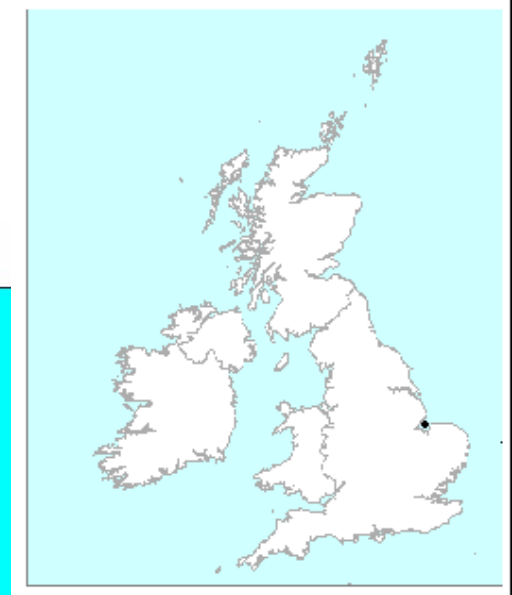




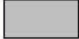

Our purpose:

“To conserve and enhance the natural environment, for its intrinsic value, the well-being and enjoyment of people, and the economic prosperity that it brings”

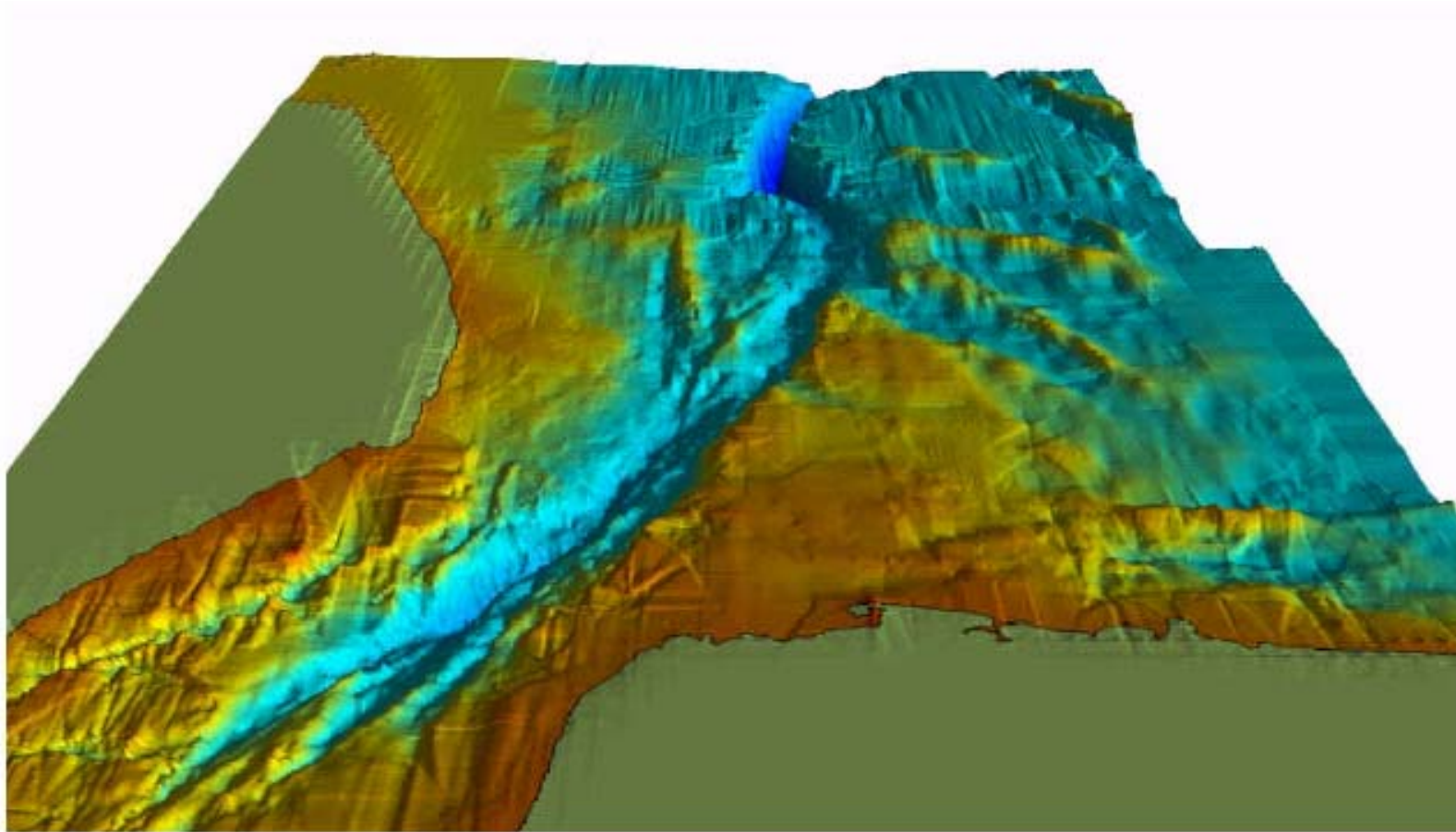
4 strategic objectives:

- A **healthy** natural environment
- People are inspired to **value and conserve** the natural environment
- **Sustainable** use of the natural environment
- A **secure** environmental future.



Legend	
	Inter Tidal Sands
	Sub Tidal Areas
	Towns
	Site Boundary
	Major Roads

Bathymetry of Wash, Lincolnshire & N Norfolk Coasts



Common Seal



Peacock worm



Brittlestar



Hornwrack

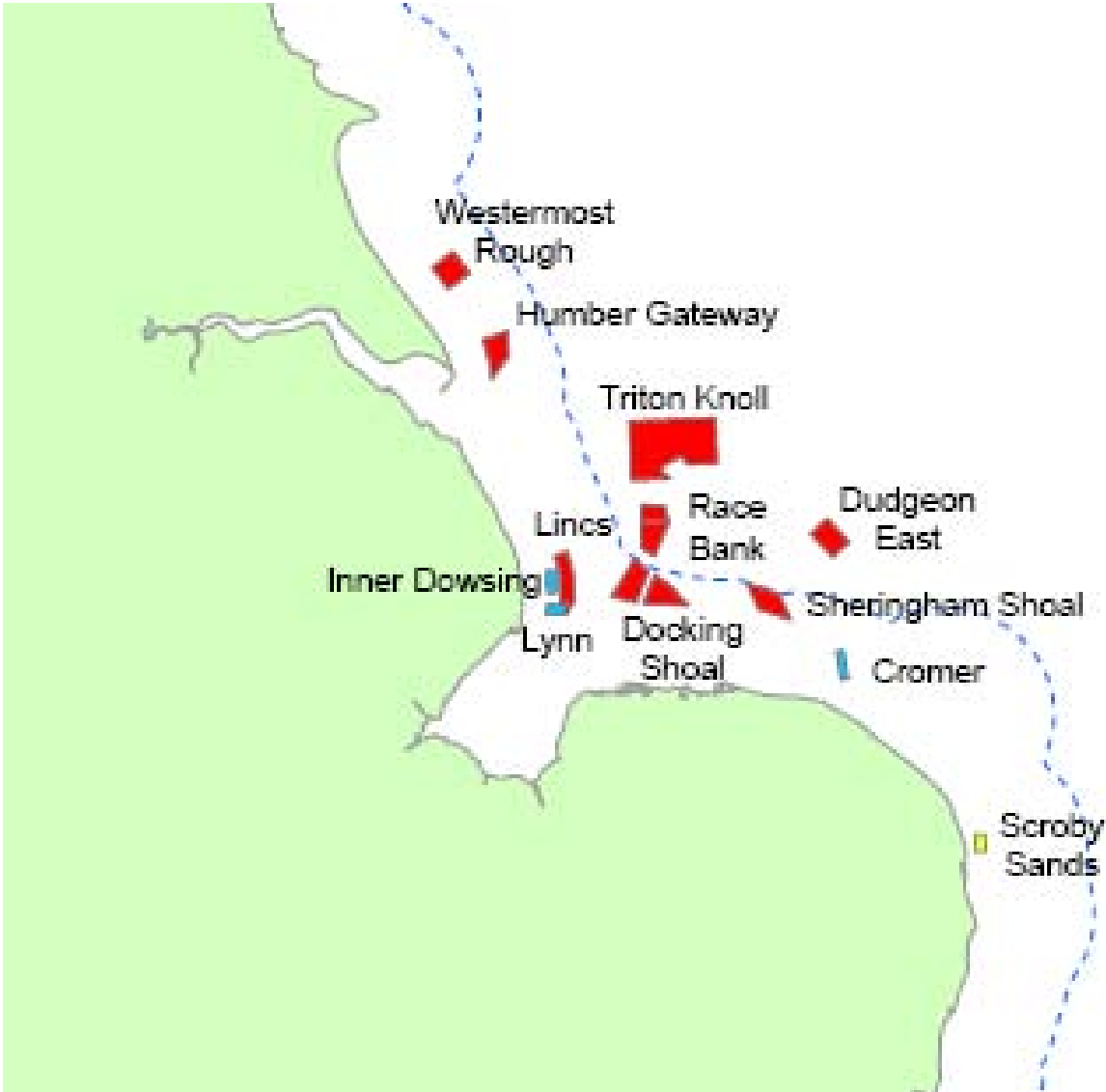
Ross worm (*Sabellaria spinulosa*) reef



Gat Sand mussel
(*Mytilus edulis*) bed



Offshore windfarm developments in the Greater Wash



Samphire (*Glasswort*
spp.)



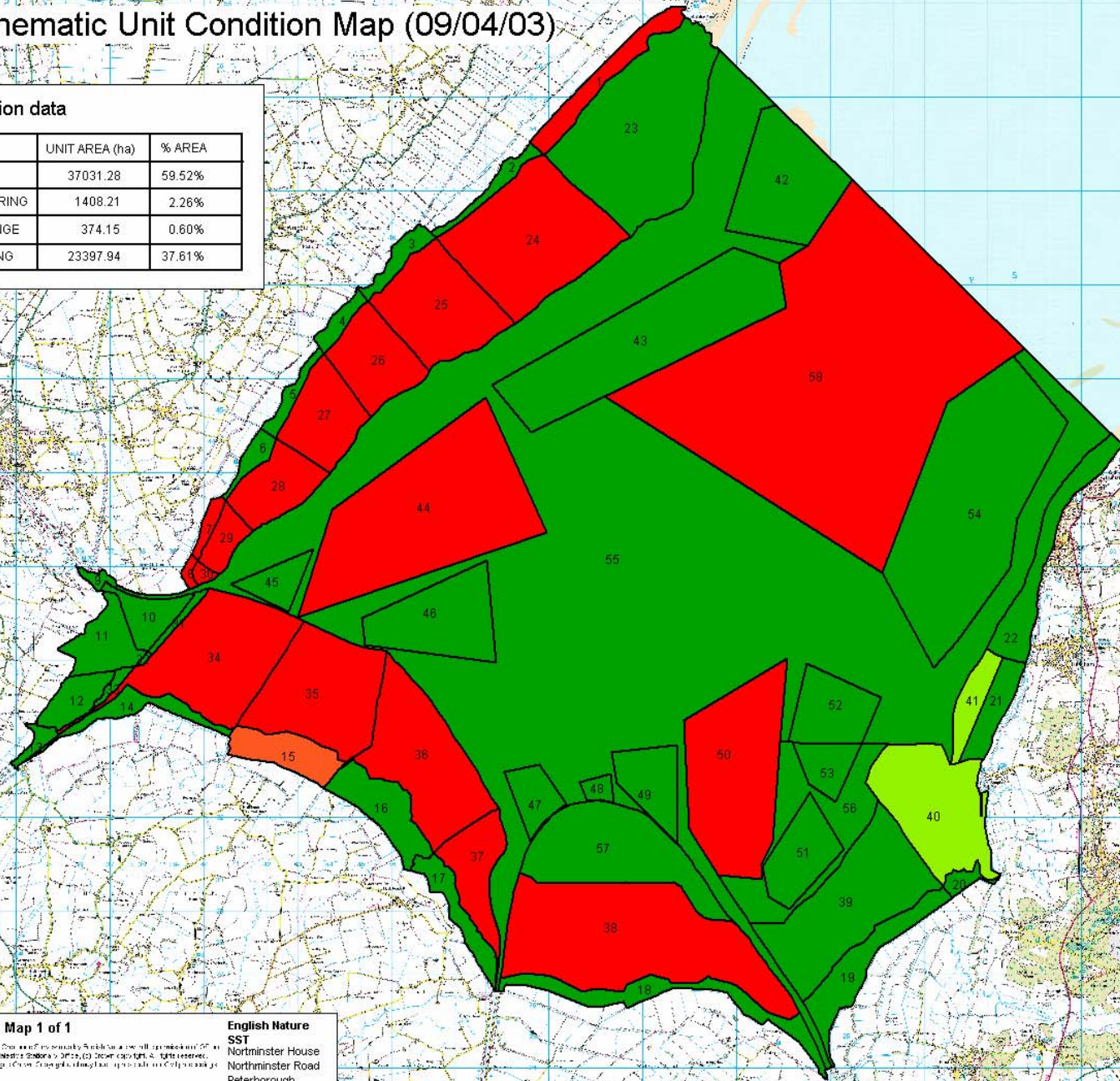
Wildfowling



The Wash - Thematic Unit Condition Map (09/04/03)

Map Legend & Condition data

CONDITION	UNIT AREA (ha)	% AREA
■ FAVOURABLE	37031.28	59.52%
■ UNFAVOURABLE RECOVERING	1408.21	2.26%
■ UNFAVOURABLE NO CHANGE	374.15	0.60%
■ UNFAVOURABLE DECLINING	23397.94	37.61%



Scale 1:125000 Map 1 of 1

This map is made available on the condition that it is not to be used for any purpose other than that for which it was prepared. It is not to be used for any other purpose without the prior written consent of English Nature. It is not to be used for any other purpose without the prior written consent of English Nature. Licence number 0022296

Compiled by Stuart Mackler Date: 9 April 2003 GIS Ref: EN

English Nature
SST
Northminster House
Northminster Road
Peterborough
PE1 1UA

Updating the Conservation Objectives



- Duty to advise on conservation objectives (“Regulation 33 Advice” published June 2000)
- Basis for assessment of proposed activities (‘Plans or projects’)
- Monitoring against conservation objectives provides feedback on the effectiveness of European marine site management measures (Management Scheme published 2002)

Conservation Objective Example

Feature	Attribute	Measure	Target
Intertidal mudflats and sandflats	Extent	Area (hectares)	No decrease in extent from an established <i>baseline</i> , subject to <i>natural change</i>

Summary of Interest Features & Attributes

NATURAL
ENGLAND

Interest Features:

Large Shallow Inlet & Bay

Reef (of *S. spinulosa*)

Subtidal sandbanks

Intertidal mudflats & sandflats (incl mussel & cockle beds)

Saltmarsh

Lagoons

Harbour Seal

Otter

Birds

Attributes:

Habitat extent

Distribution of biological community (flora / fauna)

Extent of biological community

Species composition of biological community

Sediment characteristics

Topography / bathymetry

Presence of positive / negative indicator species

Species population size

Updating the Conservation Objectives cont...



Comprehensive consultation exercise undertaken:

- Email to Management & Advisory Groups
- 2 workshops with scientists
- 2 workshops with fishing industry representatives
- 3 workshops with European marine site advisory groups

Intertidal Mudflats and Sandflats Interest Feature



- Includes the cockle and mussel bed features of the site. Key attributes are:
 - Distribution of beds
 - Extent of beds (for mussel: total bed area & extent of individual beds)
 - Abundance of stock
 - Size structure of stock
- Also very important feeding habitat for bird features incl. oystercatcher, knot, eider

Intertidal Mudflats and Sandflats Interest Feature cont...



- Example target for mussel stock abundance:

"Total stock of mussel should exceed 12,000t of which 7,000t must be mussel $\geq 45\text{mm}$ (mean over 6 year reporting cycle). To support the bird interest total stock of mussel ($\geq 20\text{mm}$) and cockle ($\geq 15\text{mm}$) should not fall below 40kg dry weight per bird at the start of winter (baseline population for oystercatcher approx 24,000 birds)"