



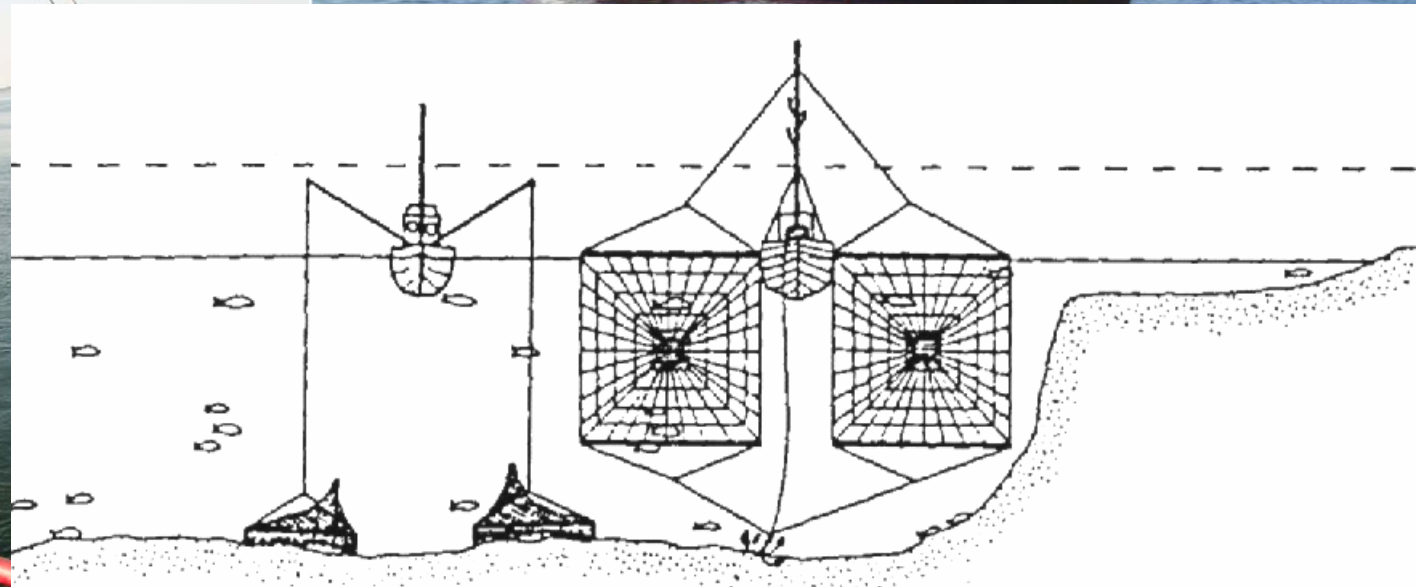
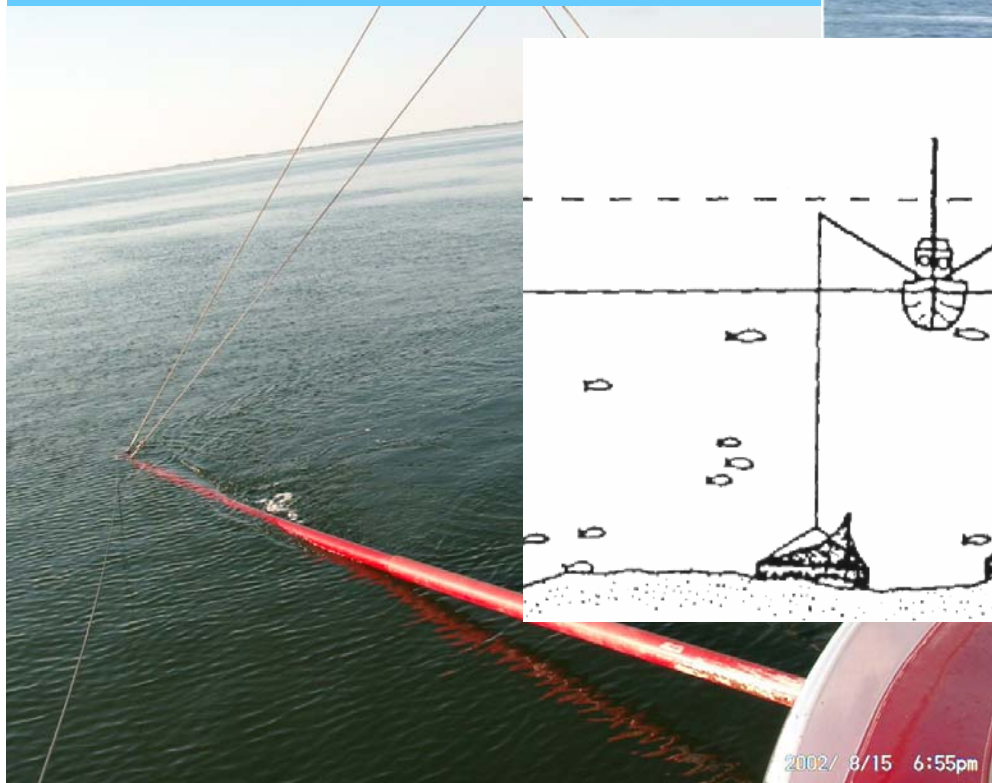
**Fish Monitoring in the  
Schleswig-Holstein Wadden Sea  
1991-2005**

## Method

## stow net fishery



- net opening: 9 x 10 m
- mesh size in codend: 8 mm
- haul duration: 3 - 4 hours





## Frequency

1991-2005:

**1 per year in August**

1997-2002

**2 per year in June and August**

# Sampling sites



Hörnum Deep  
since 2001



Meldorf Bight  
since 1991



# Sampling sites



Hörnum  
Deep

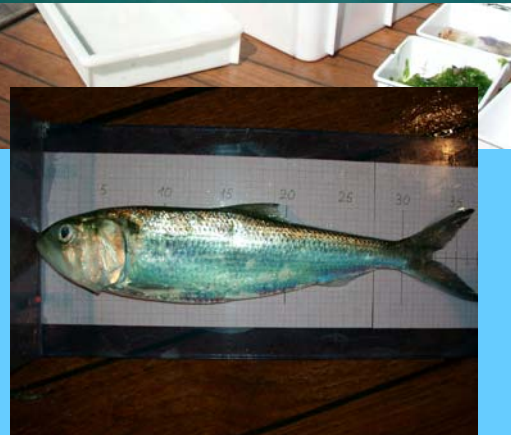


## Sample elaboration



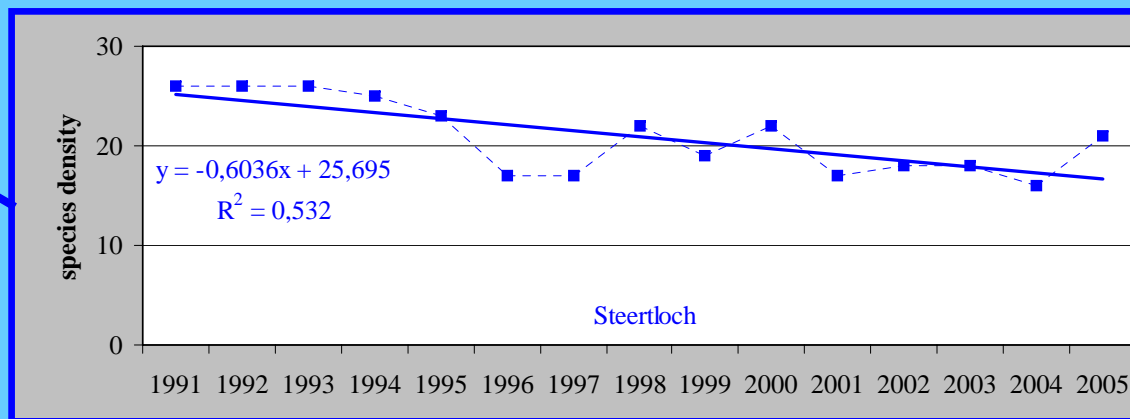
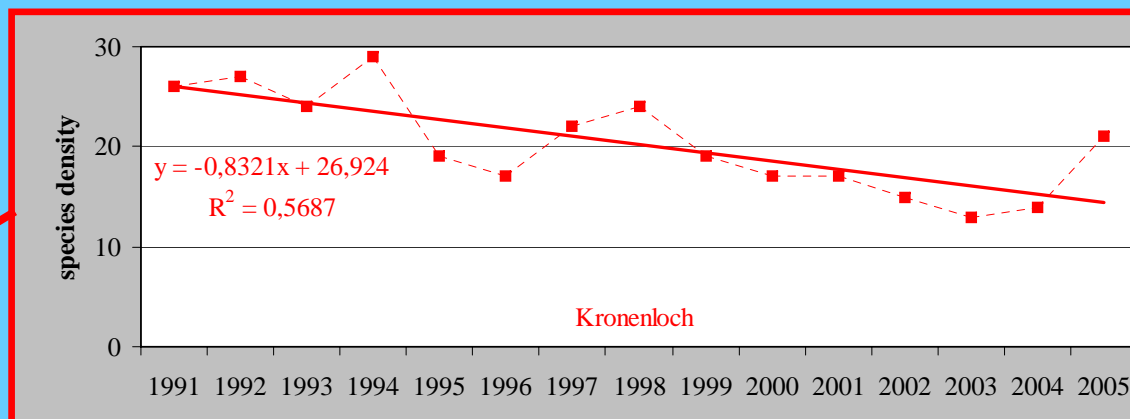
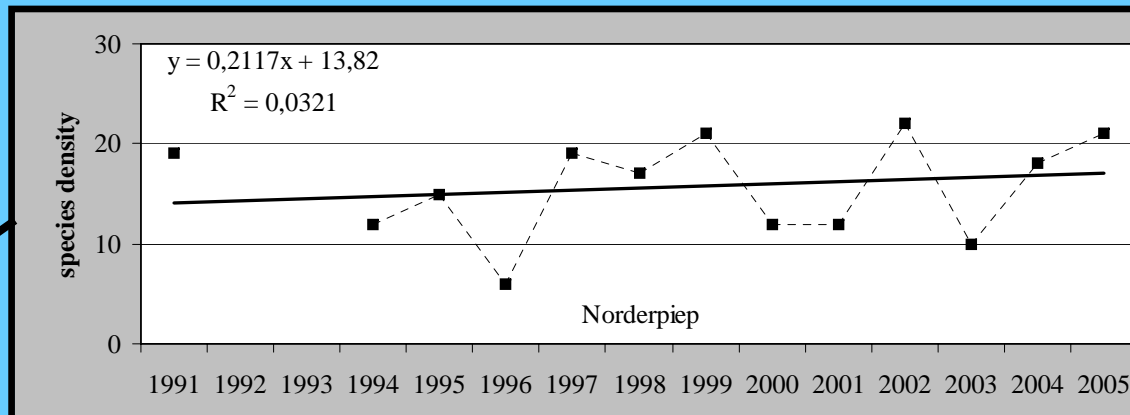
- sorting
- counting
- weighing
- measuring

# Samples - Example

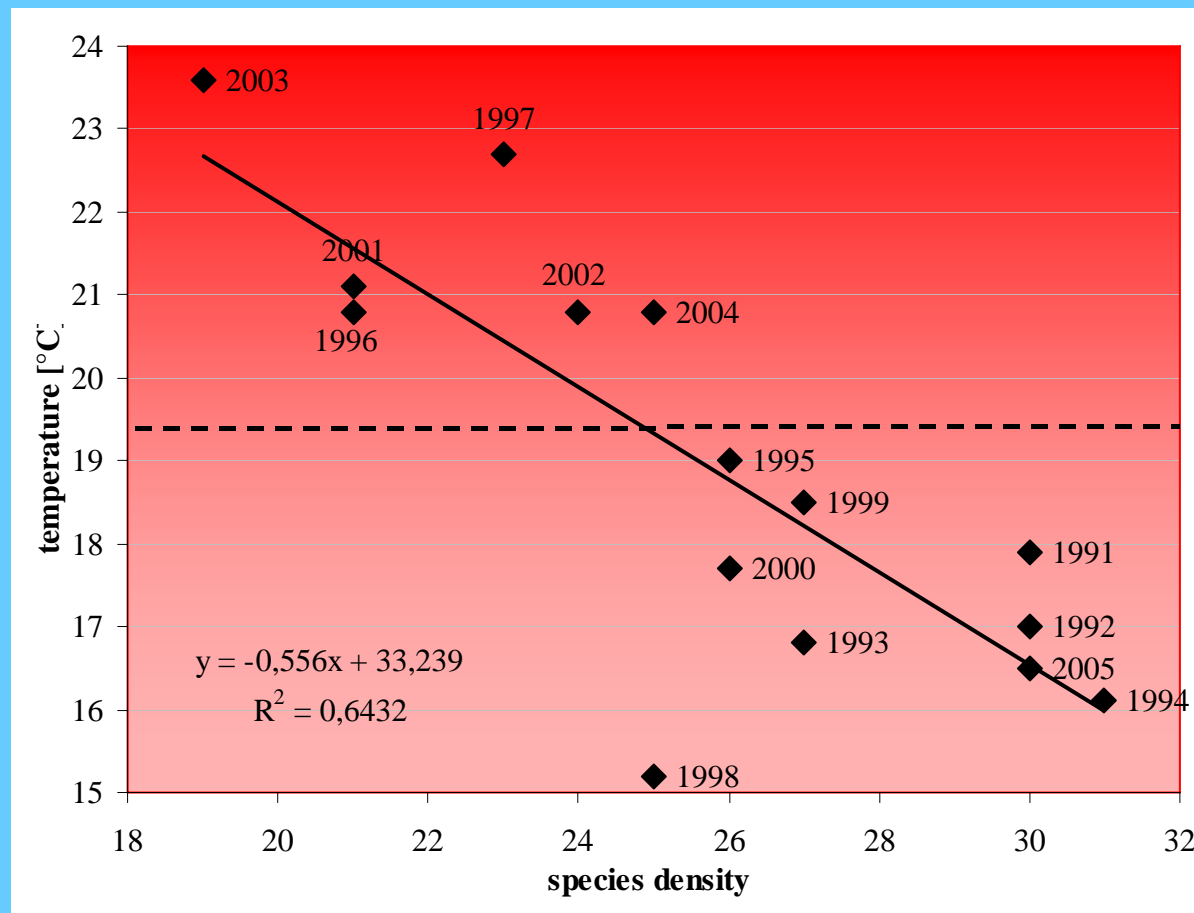


# Results

## Species density in the Meldorf Bight

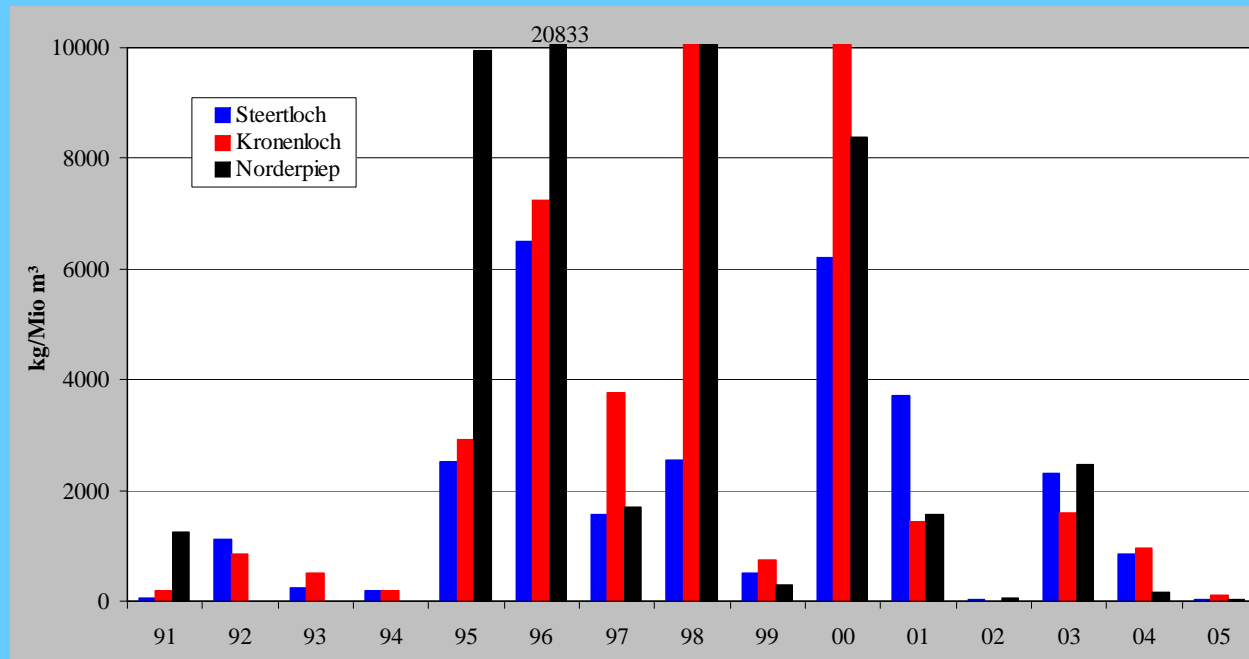
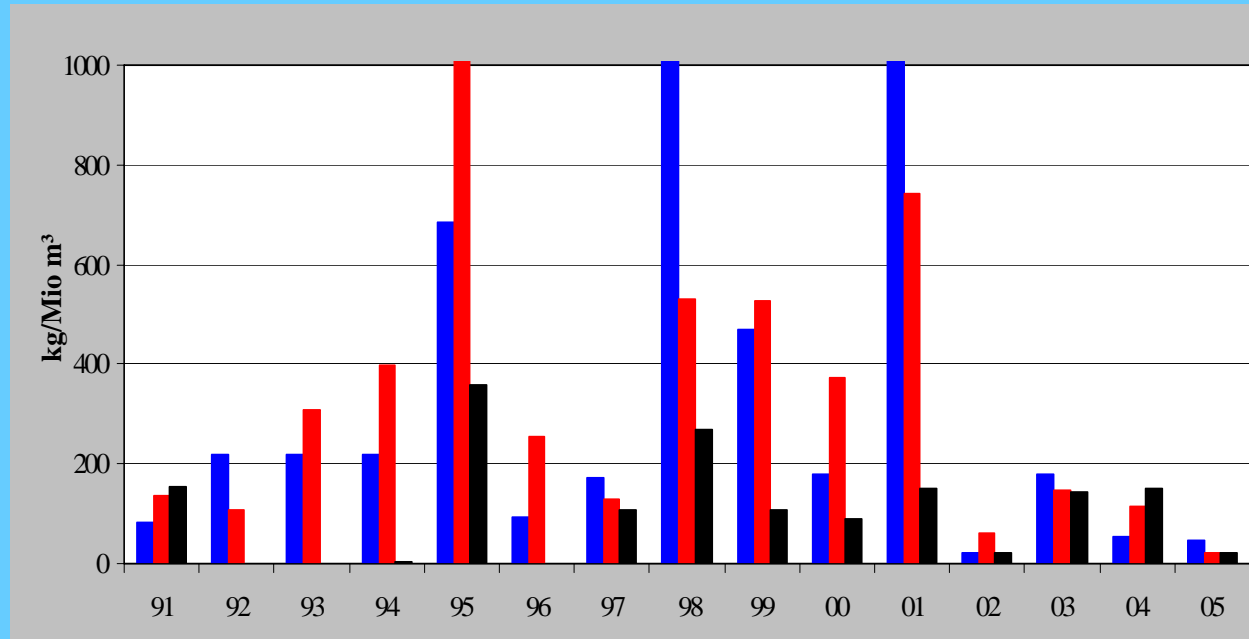


# species density is temperature dependent



Another result  
fish biomass  
shows  
strong  
fluctuations

jellyfish  
biomas  
as  
well





**to be continued...?**